



FutureThink
PLAN TO EMPOWER

FINAL REPORT



Central Bucks School District
Enrollment Projection Study
January 4, 2024

INTRODUCTION

FutureThink was contracted to develop enrollment projections for the Central Bucks School District.

This report contains ten-year enrollment projections, which were developed for the Central Bucks School District by analyzing the following data:

- ▶ Live birth data
- ▶ Historical enrollment
- ▶ Community demographics
- ▶ Housing information

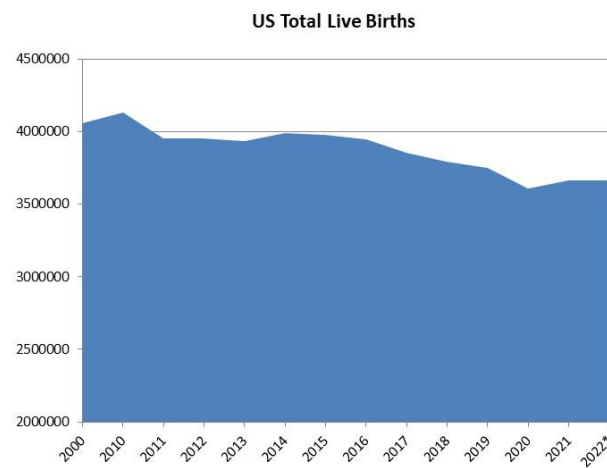
The projections presented in this report are meant to serve as a planning tool for the future and represent the most likely direction of the District.



Central Bucks School District

NATIONAL & PENNSYLVANIA TRENDS IN ENROLLMENT

The United States as a whole continues to undergo major shifts in public student enrollment. Births are a significant part of this shift. From 2000 to 2010, births increased then declined until 2014 when there was a slight uptick. Since 2014, there has been steady decline reaching an all-time low in 2020. The decrease from 2019 to 2020 was approximately 4 percent. However, in 2021, there was a slight uptick of 1.5 percent. Births dropped slightly from 2021 to 2022.



Source: CDC, NVSS, National Vital Statistics Reports, Report No. 28, June 2023

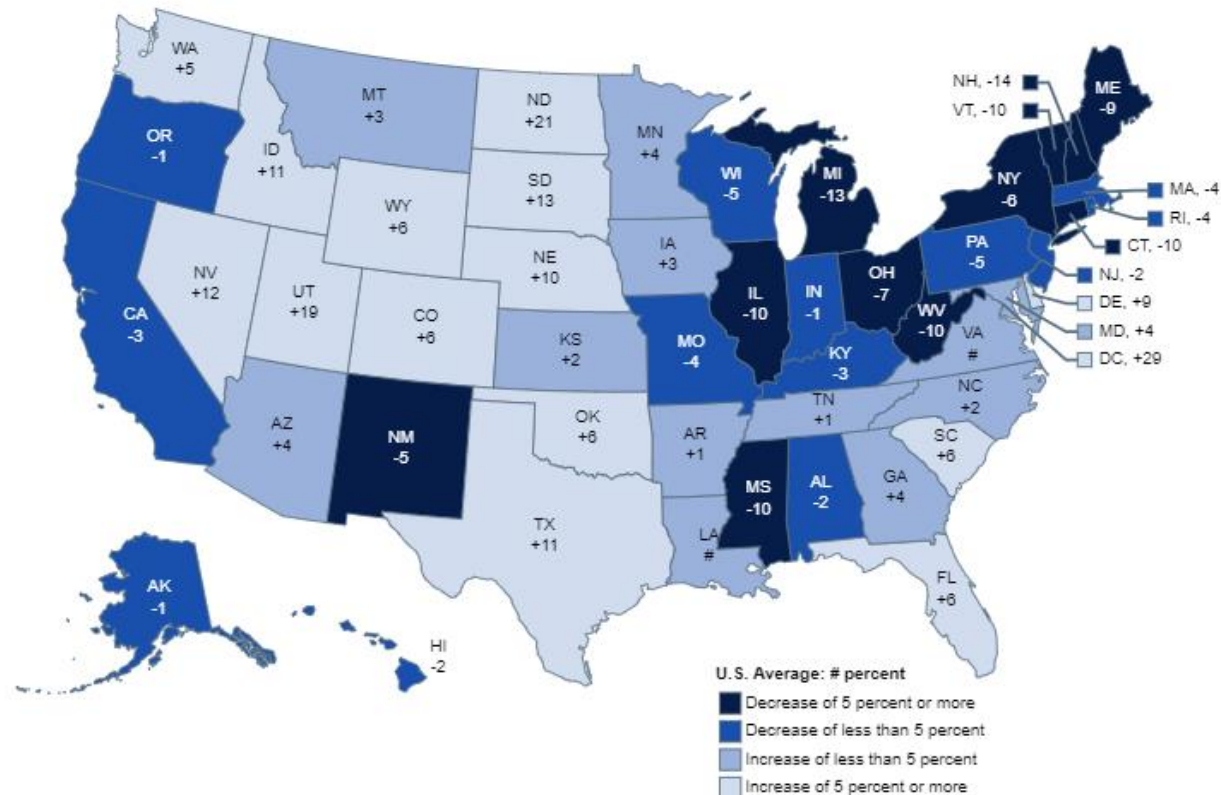
From the 2019-20 to the 2020-21 school year, total public school enrollment in Pre-K - 12 dropped from 50.8 million to 49.4 million students. From 2009-10 to the 2019-20 school year, however, enrollment had increased overall by 1.4 million.



Central Bucks School District

The figure below illustrates the change in Pre-K - 12 public school enrollment from the 2009-10 to the 2020-21 school year. States with growth in enrollment were primarily in the southeast and west. Pennsylvania experienced a decrease of 5 percent.

Figure 2. Percentage change in public elementary and secondary school enrollment, categorized into specific ranges, by state: Fall 2009 to fall 2020



Rounds to zero.

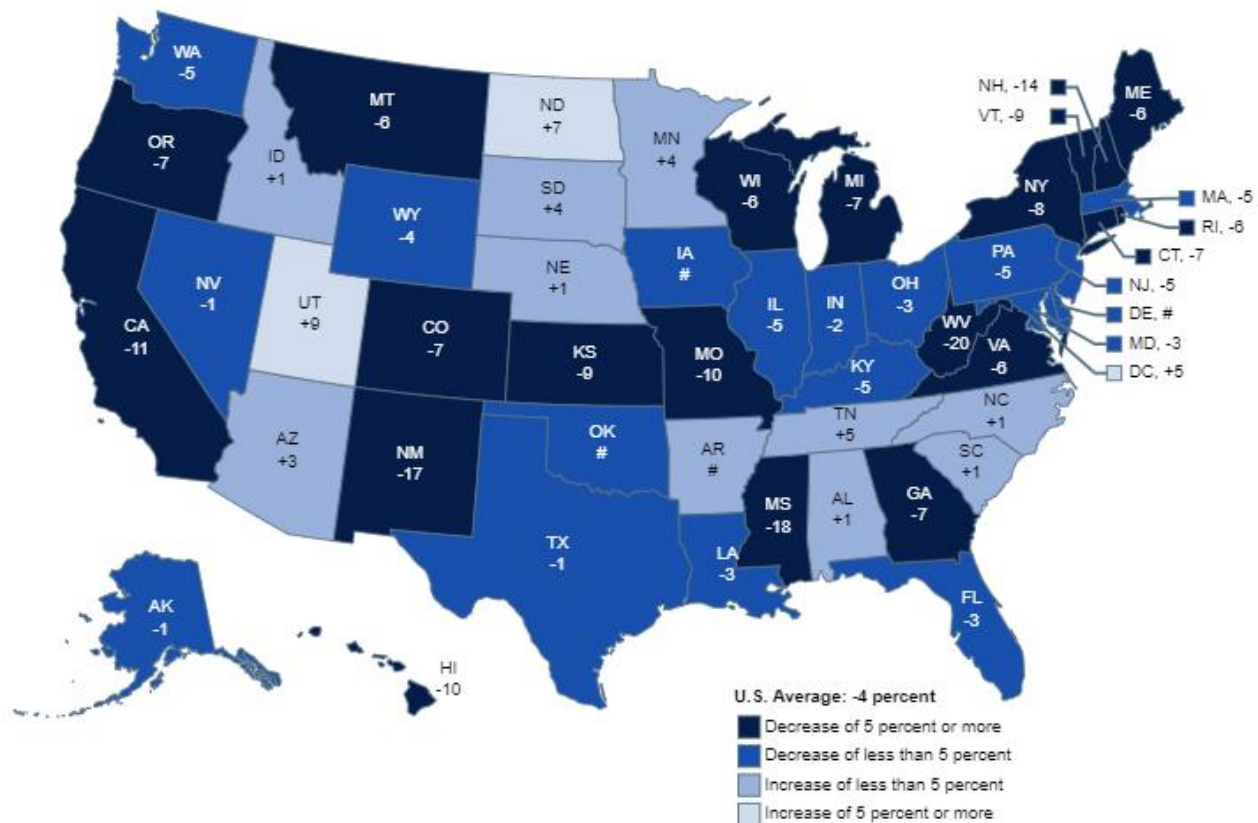
NOTE: U.S. average is for the 50 states and the District of Columbia. Data include both traditional public schools and public charter schools. Includes imputations for nonreported prekindergarten enrollment in California and Oregon for fall 2020. Includes imputations for nonreported enrollment for all grades in Illinois for fall 2020. Categorizations are based on unrounded percentages.

SOURCE: U.S. Department of Education, National Center for Education Statistics, Common Core of Data (CCD), "State Nonfiscal Survey of Public Elementary/Secondary Education," 2009-10 and 2020-21 Preliminary. See *Digest of Education Statistics 2021*, table 203.20.

Central Bucks School District

The figure below illustrates the projected change in Pre-K-12 public school enrollment from the 2020-21 to the 2030-31 school year. Growth is expected to continue primarily in parts of the southeast and upper midwest. Pennsylvania is projected to experience a decrease of 5 percent.

Figure 3. Projected percentage change in public elementary and secondary school enrollment, categorized into specific ranges, by state: Fall 2020 to fall 2030



Rounds to zero.

NOTE: U.S. average is for the 50 states and the District of Columbia. Data include both traditional public schools and public charter schools. Includes imputations for nonreported prekindergarten enrollment in California and Oregon for fall 2020. Includes imputations for nonreported enrollment for all grades in Illinois for fall 2020. Projections in this figure were calculated after the onset of the coronavirus pandemic and take into account the expected impacts of the pandemic. Categorizations are based on unrounded percentages.

SOURCE: U.S. Department of Education, National Center for Education Statistics, Common Core of Data (CCD), "State Nonfiscal Survey of Public Elementary/Secondary Education," 2020-21 Preliminary; and State Public Elementary and Secondary Enrollment Projection Model, through 2030. See *Digest of Education Statistics 2021*, table 203.20.

Central Bucks School District

HISTORICAL ENROLLMENT

Over the past ten years, student enrollment in the Central Bucks School District has decreased by 1,901 students in grades K – 12 including grade 13, settlement students, and students not assigned a school. Total enrollment for the 2023-24 school year is 17,244 students.

The following tables illustrate the District's enrollment history from 2014-15 through 2023-24.

Central Bucks School District
Historical Enrollment

Grade	2014-15	2015-16	2016-17	2017-18	2018-19	2019-20	2020-21	2021-22	2022-23	2023-24
K	900	885	915	885	912	893	812	857	846	721
1	1,265	1,149	1,161	1,205	1,232	1,195	1,126	1,190	1,216	1,159
2	1,358	1,320	1,199	1,216	1,258	1,276	1,198	1,200	1,231	1,239
3	1,360	1,369	1,345	1,256	1,260	1,286	1,277	1,264	1,250	1,271
4	1,419	1,382	1,393	1,375	1,293	1,299	1,293	1,347	1,327	1,283
5	1,527	1,450	1,409	1,424	1,397	1,361	1,301	1,340	1,381	1,353
6	1,538	1,535	1,478	1,451	1,472	1,442	1,370	1,350	1,378	1,418
7	1,552	1,556	1,555	1,502	1,486	1,490	1,442	1,389	1,379	1,416
8	1,615	1,575	1,557	1,578	1,522	1,511	1,483	1,468	1,420	1,409
9	1,592	1,588	1,535	1,542	1,562	1,526	1,477	1,491	1,465	1,399
10	1,624	1,593	1,603	1,537	1,554	1,586	1,519	1,482	1,518	1,479
11	1,640	1,627	1,573	1,617	1,535	1,564	1,589	1,511	1,501	1,520
12	1,680	1,673	1,646	1,598	1,661	1,594	1,617	1,620	1,570	1,492
K - 12 Total	19,070	18,702	18,369	18,186	18,144	18,023	17,504	17,509	17,482	17,159
Grade 13	0	0	0	0	0	0	0	0	0	65
Settlement	0	0	0	0	0	0	0	0	0	20
Not Assigned a School	75	70	72	71	80	81	67	64	58	0
Total	19,145	18,772	18,441	18,257	18,224	18,104	17,571	17,573	17,540	17,244

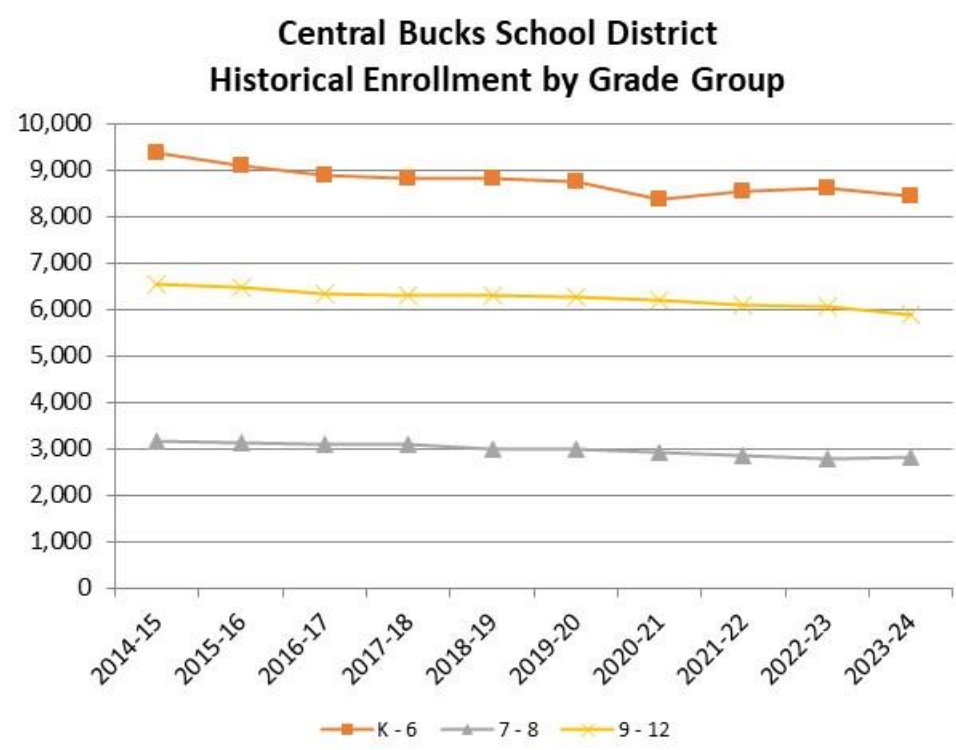
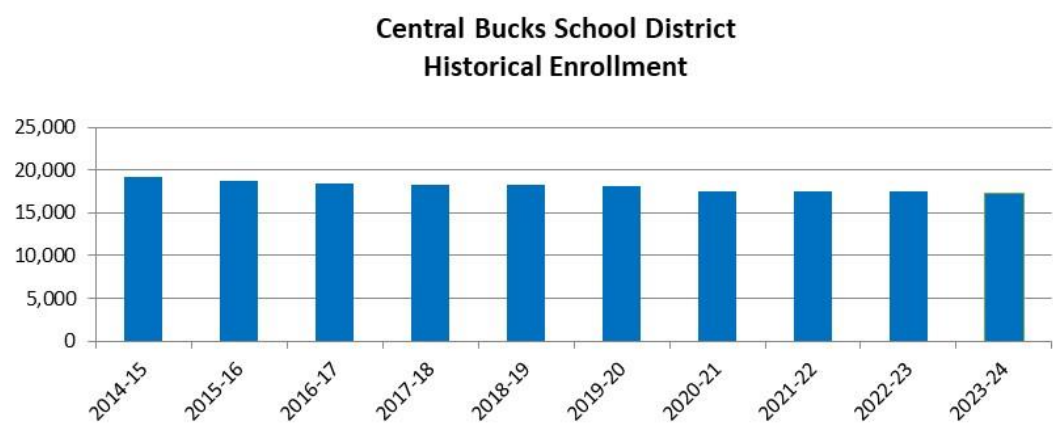
Source: Pennsylvania Department of Education; Central Bucks School District

Central Bucks School District
Historical Enrollment by Grade Group

Grade	2014-15	2015-16	2016-17	2017-18	2018-19	2019-20	2020-21	2021-22	2022-23	2023-24
K - 6	9,367	9,090	8,900	8,812	8,824	8,752	8,377	8,548	8,629	8,444
7 - 8	3,167	3,131	3,112	3,080	3,008	3,001	2,925	2,857	2,799	2,825
9 - 12	6,536	6,481	6,357	6,294	6,312	6,270	6,202	6,104	6,054	5,890
K - 12 Total	19,070	18,702	18,369	18,186	18,144	18,023	17,504	17,509	17,482	17,159
13	0	0	0	0	0	0	0	0	0	65
Settlement	0	0	0	0	0	0	0	0	0	20
Not Assigned a School	75	70	72	71	80	81	67	64	58	0
Total	19,145	18,772	18,441	18,257	18,224	18,104	17,571	17,573	17,540	17,244

Source: Pennsylvania Department of Education; Central Bucks School District

Central Bucks School District



Central Bucks School District

HOME SCHOOL ENROLLMENT

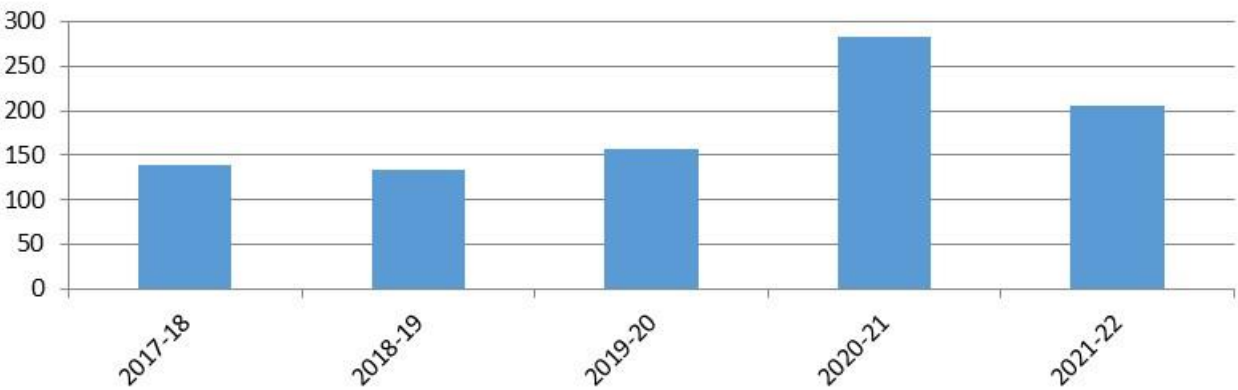
Since 2017-18, the number of Central Bucks School District students being home-schooled has risen from 139 to 205. Home school enrollment peaked in the 2020-21 school year at 283 students. Data for the 2022-23 and 2023-24 school years is not available.

Central Bucks School District
Home School Enrollment

Grade	2017-18	2018-19	2019-20	2020-21	2021-22	2022-23
Total	139	133	157	283	205	n/a

Source: <https://www.washingtonpost.com/education/interactive/2023/homeschooling-growth-data-by-district/>

Central Bucks School District
Home School Enrollment



Central Bucks School District

LIVE BIRTH DATA

Utilization of live birth data is recommended when projecting future kindergarten enrollments as it provides a helpful overall trend. The live birth counts are used in determining a birth-to-kindergarten survival ratio. This ratio identifies the percentage of children born in a representative area who attend kindergarten in the District five years later. The survival ratios for birth-to-kindergarten as well as grades 1-12 can be found later in this report.

Live birth counts are different from live birth rates. The live birth count is the actual number of live births. A birth rate is the number of births per 1,000 women in a specified population group. Birth rates are provided for counties only and for 9 age groups from 10-14 years to 45+ years.

The following tables and graph include the live birth counts for the boroughs and townships located in the District.

**Central Bucks School District
Live Birth Count
2008-2021**

Year	Chalfont Borough	Doylestown Borough	New Britain Borough	Buckingham Township
2008	88	115	25	119
2009	51	88	26	141
2010	66	88	23	109
2011	43	69	23	119
2012	61	75	17	130
2013	43	74	17	141
2014	60	54	14	125
2015	41	53	20	132
2016	49	60	12	158
2017	29	66	16	131
2018	36	56	9	129
2019	51	54	14	125
2020	52	50	15	140
2021	43	59	17	161

Source: Pennsylvania Department of Health, Office of Vital Records and Health Statistics

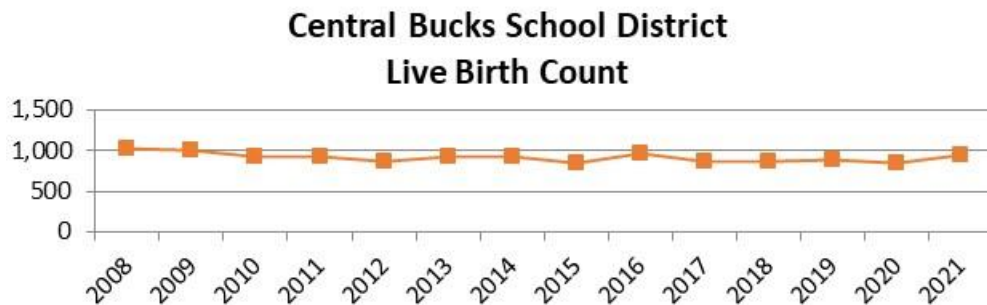


Central Bucks School District

Central Bucks School District Live Birth Count 2008-2021

Year	Doylestown Township	New Britain Township	Plumstead Township	Warrington Township	Warwick Township	Total
2008	108	94	99	223	155	1026
2009	105	93	119	263	124	1010
2010	97	98	115	211	112	919
2011	109	102	106	231	115	917
2012	77	95	112	191	106	864
2013	108	99	90	226	119	917
2014	100	94	133	224	121	925
2015	92	95	101	183	133	850
2016	130	84	127	225	119	964
2017	93	102	134	186	111	868
2018	96	76	141	203	117	863
2019	94	111	123	200	116	888
2020	100	72	110	205	92	836
2021	108	101	121	220	110	940

Source: Pennsylvania Department of Health, Office of Vital Records and Health Statistics



Central Bucks School District

DEMOGRAPHICS

The Central Bucks School District is comprised of Chalfront, Doylestown, and New Britain boroughs and Buckingham, Doylestown, New Britain, Plumstead, Warrington, and Warwick townships in Bucks County. General demographic data is included in the following tables for the areas located completely or partially in the District.

General Demographic Information

	Bucks County	State of Pennsylvania
Per Capita Income	\$54,930	\$41,234
Median Household Income	\$107,826	\$73,170
Persons Below Poverty	6.5%	11.8%

Source: US Census, American Community Survey, 2022 5-Year Estimates

Total Population

	2010	2020
Bucks County	625,572	627,987
Chalfont Borough	4,021	4,268
Doylestown Borough	8,377	8,265
New Britain Borough	2,967	2,770
Buckingham Township	20,108	20,851
Doylestown Township	17,565	17,971
New Britain Township	11,070	12,327
Plumstead Township	12,442	14,021
Warrington Township	23,418	25,639
Warwick Township	17,783	19,022

Source: US Census 2010; 2020 Decennial Census

Also included are block group estimates and projections provided by ESRI. ESRI uses a time series of estimates from the U.S. Census Bureau that includes the latest estimates and inter-censal estimates adjusted for error of closure. The Census Bureau's time series is consistent, but testing has revealed improved accuracy by using a variety of sources to track county population trends.

ESRI also employs a time series of building permits and housing starts plus residential deliveries. Data sources are integrated and then analyzed by Census Block Groups.

Sources of data include:

- ▶ Supplementary Surveys of the Census Bureau
- ▶ Bureau of Labor Statistics' (BLS) Local Area Unemployment Statistics
- ▶ BLS Occupational Employment Statistics
- ▶ InfoUSA
- ▶ U.S. Bureau of the Census' Current Population Survey
- ▶ National Planning Association Data Service



Central Bucks School District

Below is a list of definitions as they appear on the U.S. Census Bureau website, to aid in interpretation of the following tables and maps.

Household:

A household includes all the people who occupy a housing unit as their usual place of residence.

Average family size:

A measure obtained by dividing the number of members of families by the total number of families (or family householders).

Family household (Family):

A family includes a householder and one or more people living in the same household who are related to the householder by birth, marriage, or adoption. All people who are related to the householder are regarded as members of his or her family. A family household may contain people not related to the householder, but those people are not included as part of the householder's family in census tabulations. Thus, the number of family households is equal to the number of families, but family households may include more members than do families. A household can contain only one family for purposes of census tabulations. Not all households contain families since a household may comprise a group of unrelated people or one person living alone.

Householder:

The person, or one of the people, in whose name the home is owned, being bought, or rented. If there is no such person present, any household member 15 years old and over can serve as the householder for the purposes of the census. Two types of householders are distinguished: a family householder and a nonfamily householder. A family householder is a householder living with one or more people related to him or her by birth, marriage, or adoption. The householder and all people in the household related to him are family members. A nonfamily householder is a householder living alone or with nonrelatives only.

Central Bucks School District

The following tables illustrate the current estimates and 5-year population projections based on block groups that comprise the state and school district, indicating areas of current and projected growth. The tables have been developed to determine selected age group projections and projections for household income, family size, and total households.

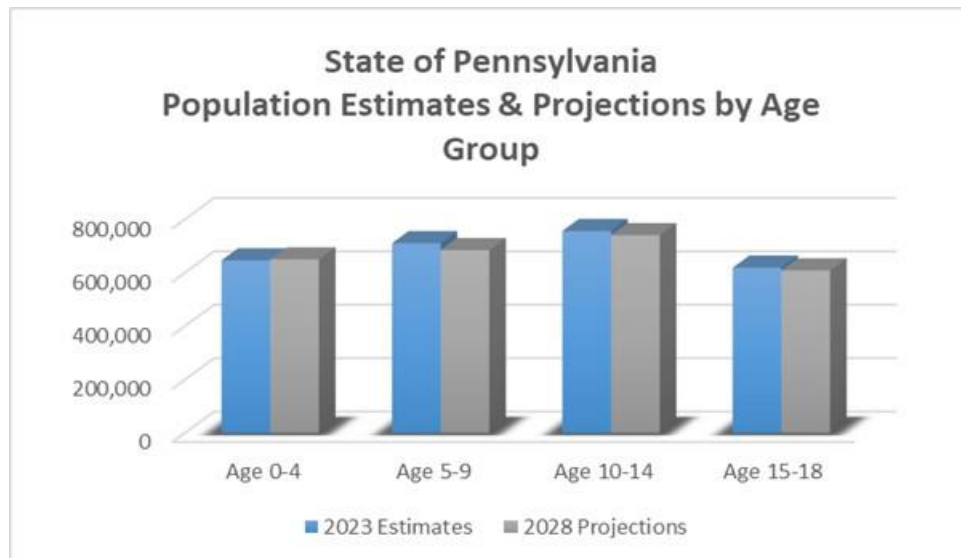
The total population in the State of Pennsylvania is 13,039,412. This population is projected to increase by 2,617 people, or less than 1% over a 5-year period.

The 0-18-year-old population in the State currently totals 2,730,251. This population is projected to decrease by 48,080 children, or approximately 2 percent.

The median age is projected to increase by approximately 2% from 42.1 to 43.0 years of age.

State of Pennsylvania	2023 Estimates	2028 Projections	Change 2023-28	Change 2023-28 (%)
Total Population	13,039,412	13,042,029	2,617	0.0%
Age 0-4	645,844	649,457	3,613	0.6%
Age 5-9	709,911	684,242	-25,669	-3.6%
Age 10-14	755,892	740,191	-15,701	-2.1%
Age 15-18	618,604	608,281	-10,323	-1.7%
Total Age 0-18	2,730,251	2,682,171	-48,080	-1.8%
Median Age	42.1	43.0	0.9	2.1%

Source: ESRI

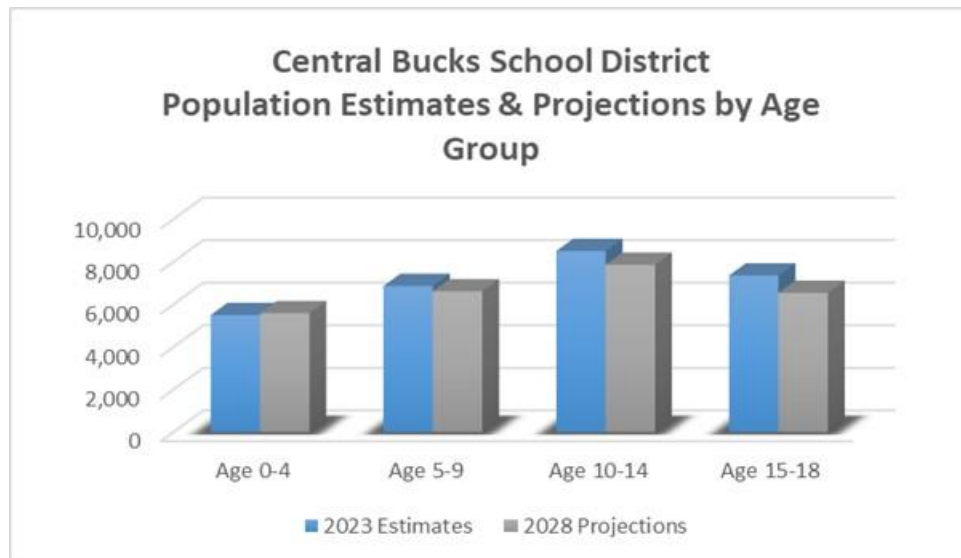


Central Bucks School District

The total population in the District is 122,825. This population is projected to increase by 603 people, or less than 1% over a 5-year period. The 0-18-year-old population in the District currently totals 28,202. This population is projected to decrease by 1,630 people, or approximately 6 percent. The median age is projected to increase by approximately 2%, from 44.3 to 45.1 years of age.

Central Bucks School District	2023 Estimates	2028 Projections	Change 2023-28	Change 2023-28 (%)
Total Population	122,825	123,428	603	0.5%
Age 0-4	5,491	5,582	91	1.7%
Age 5-9	6,858	6,606	-252	-3.7%
Age 10-14	8,500	7,852	-648	-7.6%
Age 15-18	7,353	6,532	-821	-11.2%
Total Age 0-18	28,202	26,572	-1,630	-5.8%
Median Age	44.3	45.1	0.8	1.8%

Source: ESRI



Central Bucks School District

Median and average household incomes in the State are projected to increase by approximately 15% over a 5-year period. The average family size is projected to decrease by approximately 1%, and the total number of family households is projected to increase by approximately 1 percent.

State of Pennsylvania	2023 Estimates	2028 Projections	Change 2023-28	Change 2023-28 (%)
Median Household Income	\$72,033	\$82,501	\$10,468	14.5%
Average Household Income	\$103,862	\$119,317	\$15,455	14.9%
Average Family Size	3.02	2.98	-0.04	-1.3%
Total Family Households	3,298,402	3,329,328	30,926	0.9%

Source: ESRI

Median and average household incomes in the District are projected to increase by approximately 16% and 12%, respectively over a 5-year period. The average family size is projected to decrease by approximately 1%, and the total number of family households is projected to increase by approximately 2 percent.

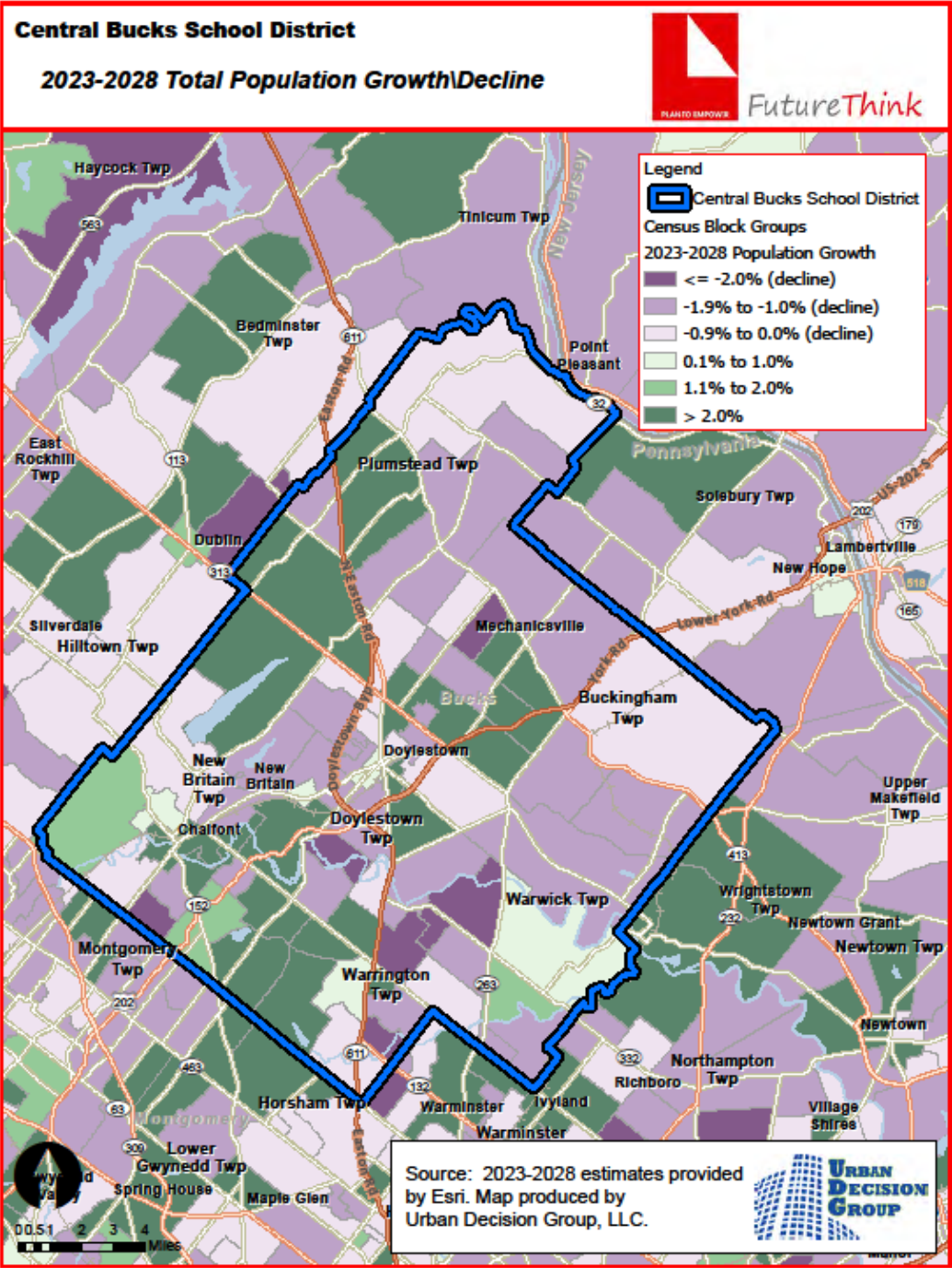
Central Bucks School District	2023 Estimates	2028 Projections	Change 2023-28	Change 2023-28 (%)
Median Household Income	\$128,017	\$147,858	\$19,841	15.5%
Average Household Income	\$176,054	\$197,595	\$21,541	12.2%
Average Family Size	3.16	3.12	-0.04	-1.3%
Total Family Households	32,634	33,171	537	1.6%

Source: ESRI

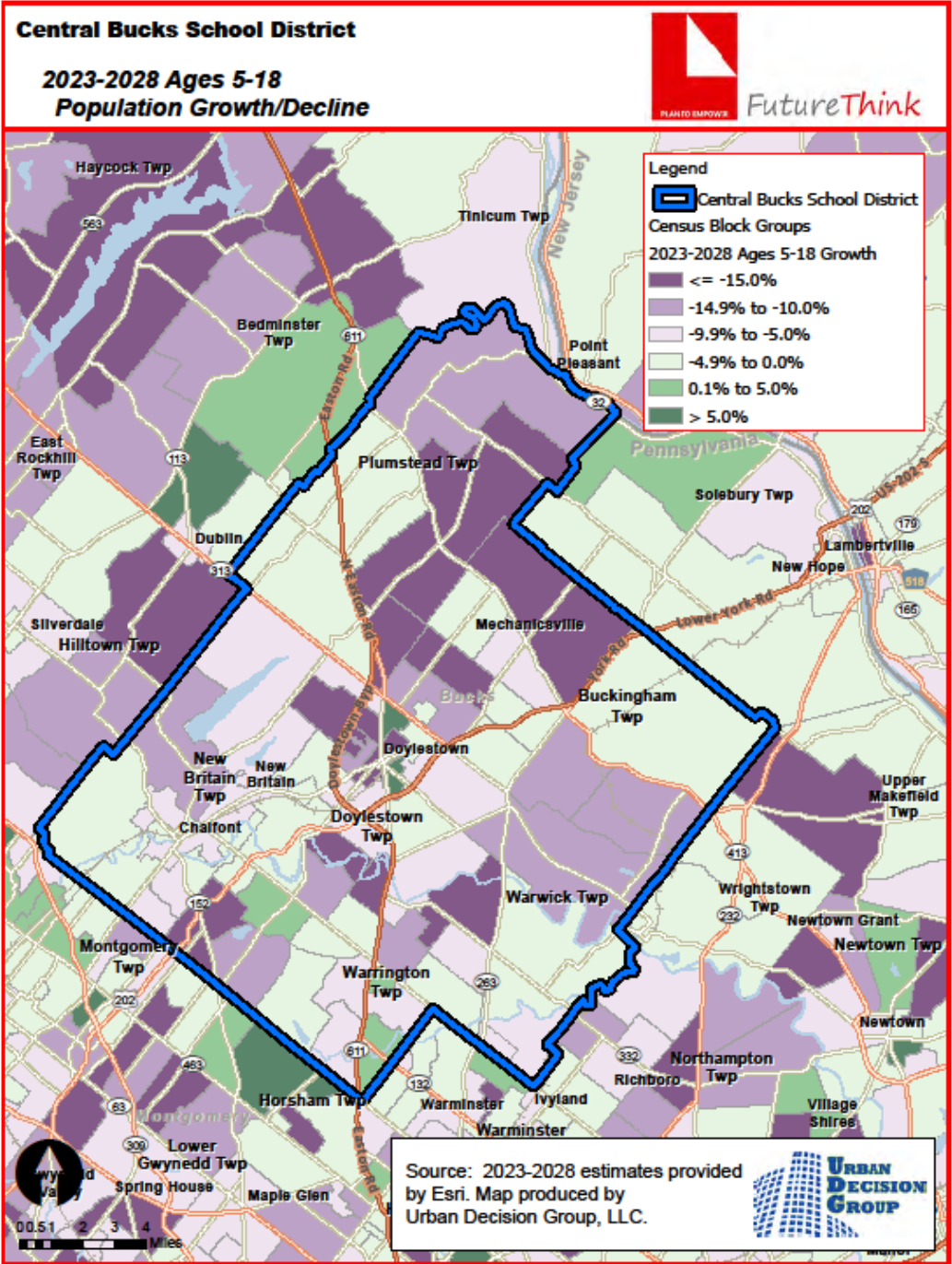
The maps on the following pages illustrate the data identified in the tables. The color coding identifies areas within the District that may be increasing or decreasing at different rates than others.



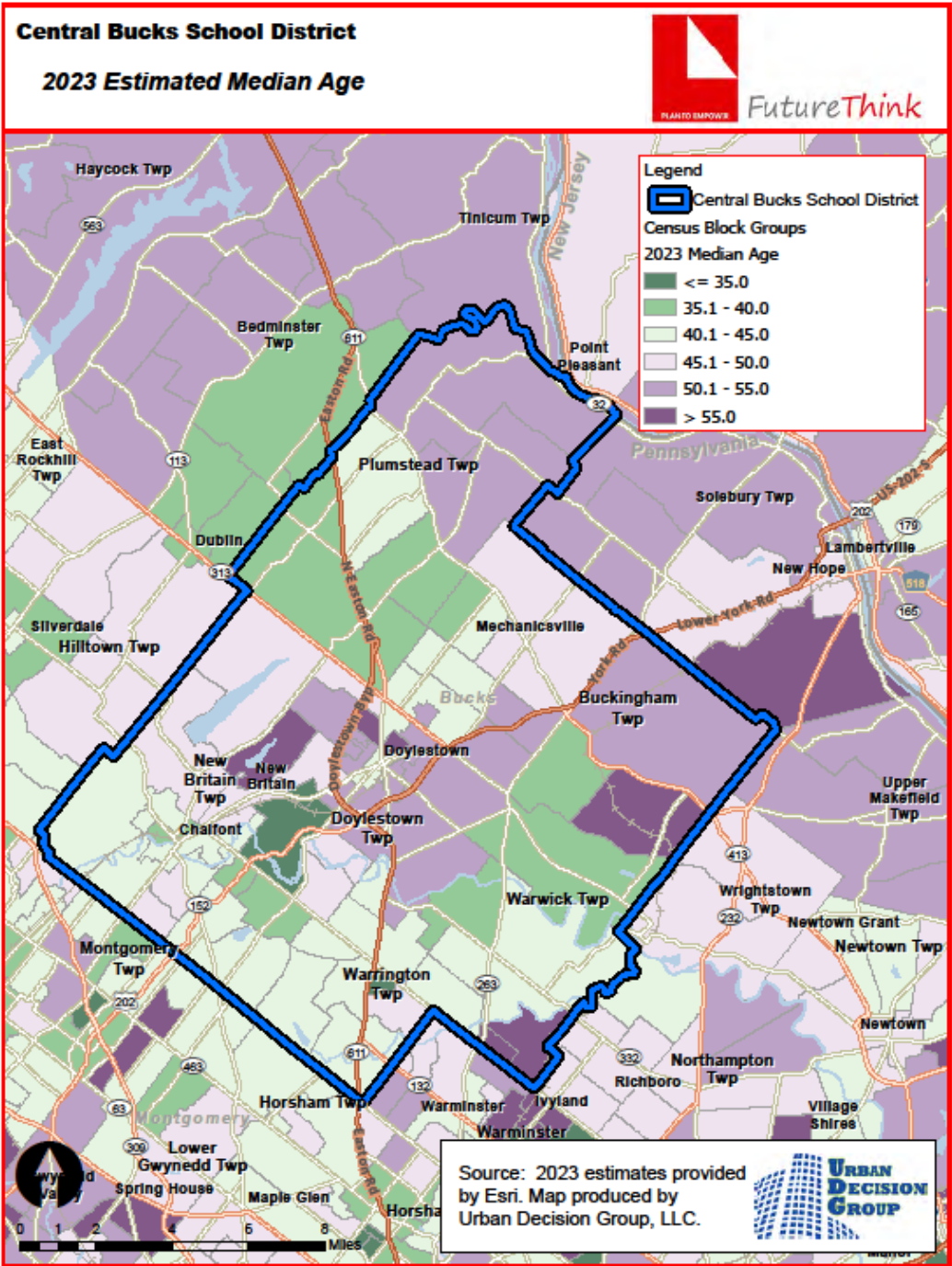
Central Bucks School District



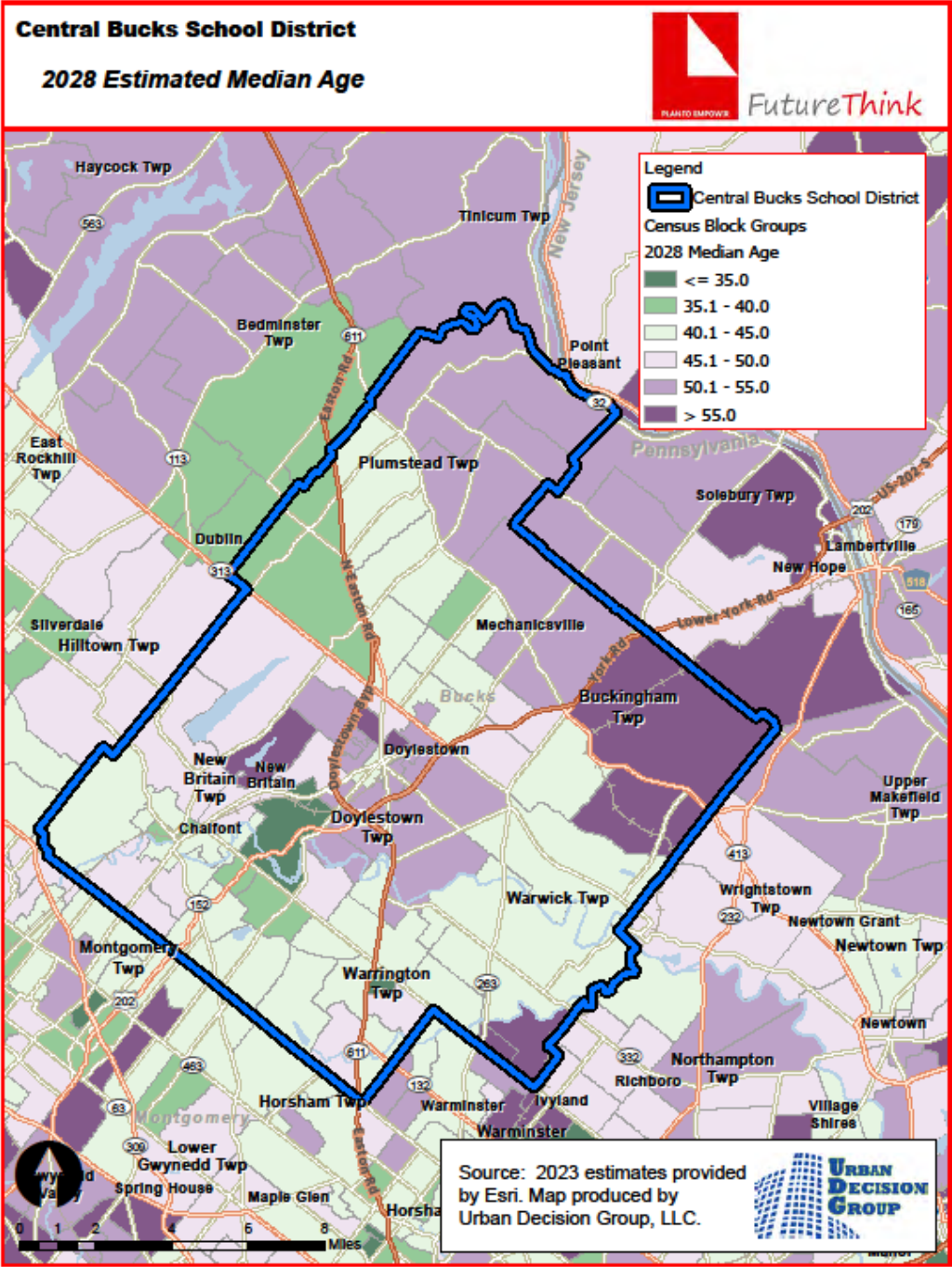
Central Bucks School District



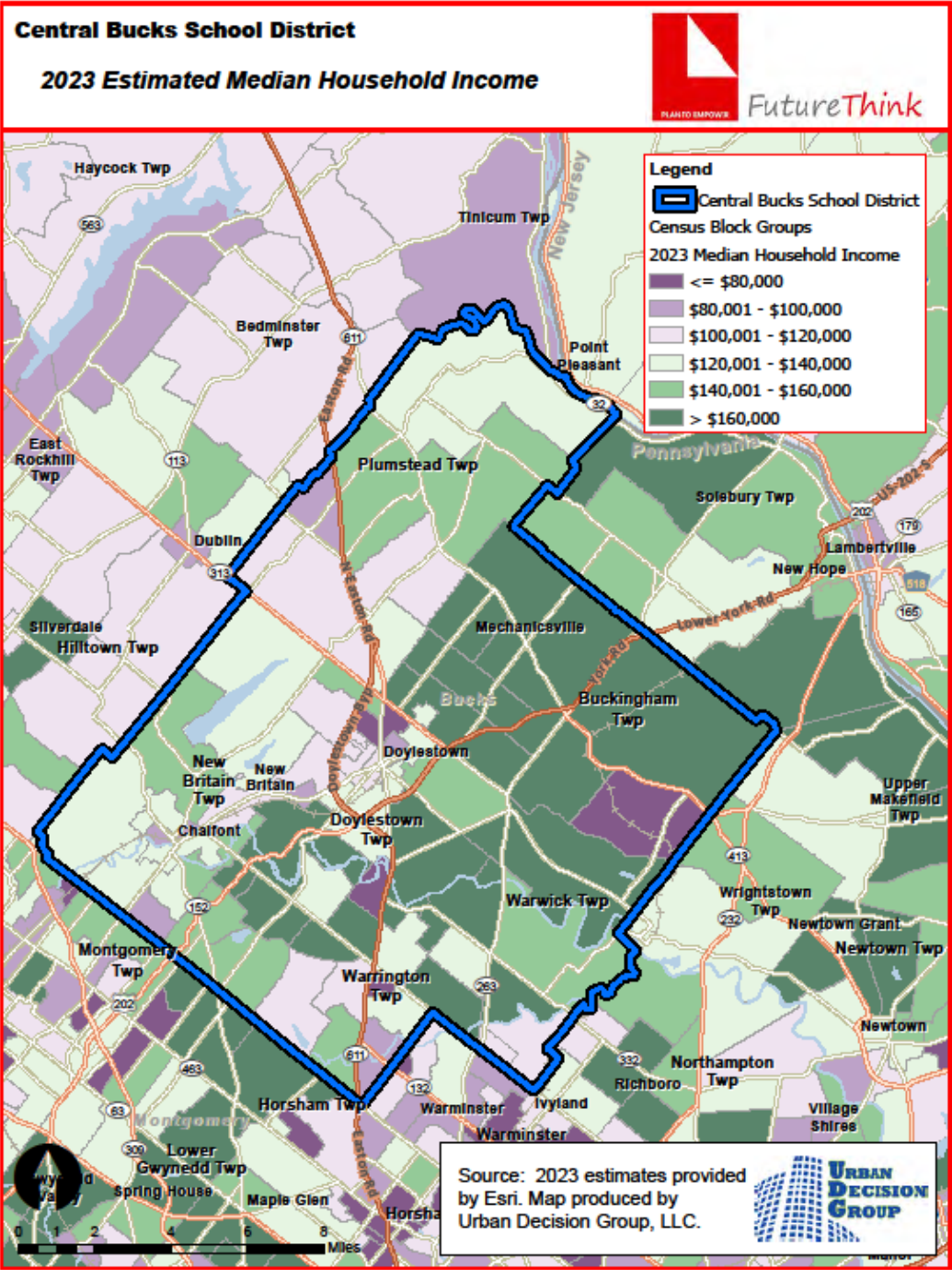
Central Bucks School District



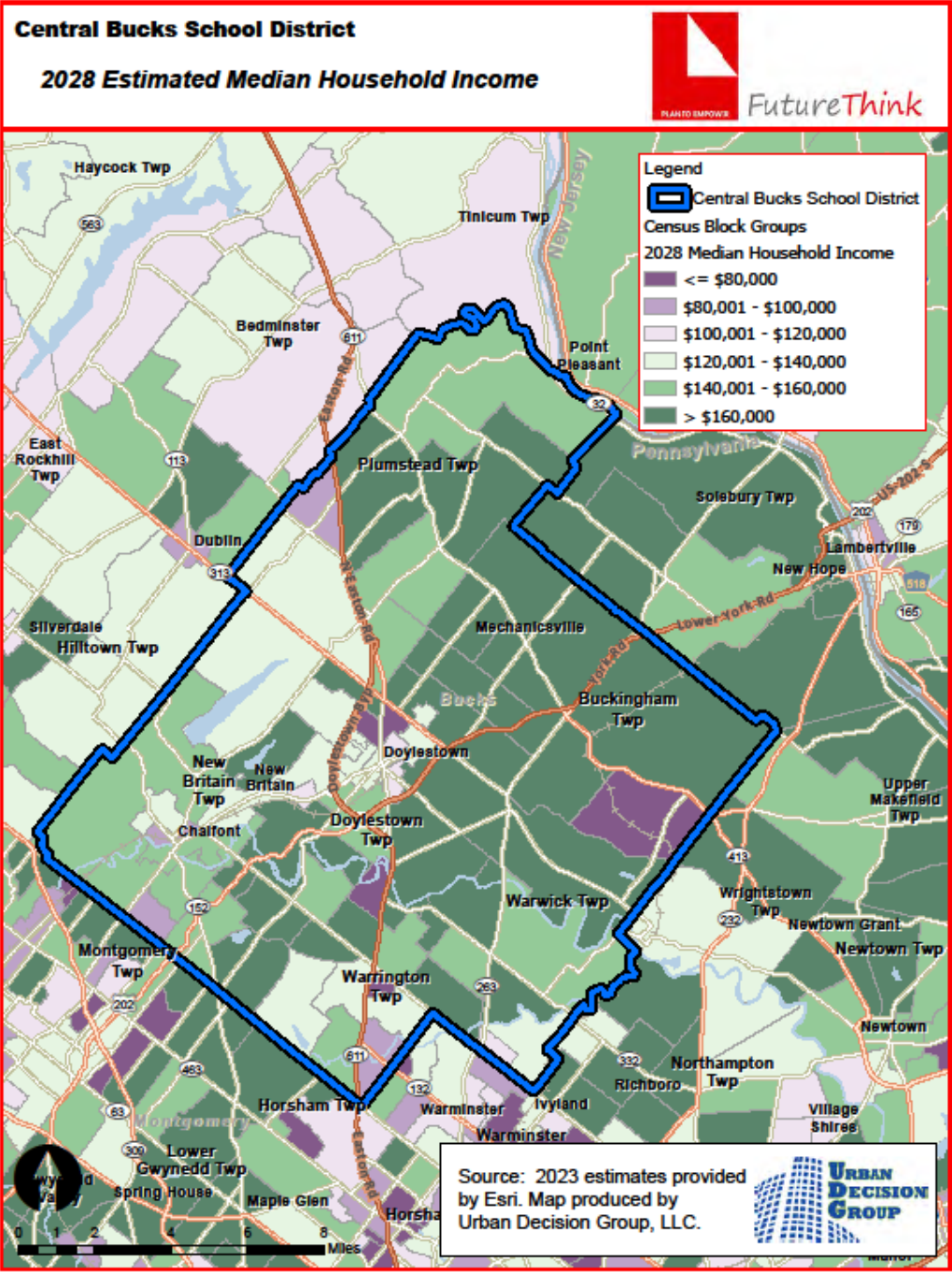
Central Bucks School District



Central Bucks School District



Central Bucks School District



Central Bucks School District

HOUSING INFORMATION

The table below illustrates the number of single-family dwelling building permits issued each year in Chalfont, Doylestown, and New Britain boroughs and Buckingham, Doylestown, New Britain, Plumstead, Warrington, and Warwick townships.

of Building Permits Issued for Single Family Dwellings

Year	Chalfont Borough	Doylestown Borough	New Britain Borough	Buckingham Township	Doylestown Township
2013	12	2	2	45	6
2014	0	2	0	15	8
2015	0	1	4	14	16
2016	0	6	11	11	10
2017	1	6	0	22	32
2018	34	3	1	24	12
2019	25	2	0	35	8
2020	8	4	0	34	11
2021	1	6	0	13	26
2022	22	3	0	2	35
2023*	1	2	0	4	25

Source: SOCDS Building Permits Database

*preliminary through October 2023

of Building Permits Issued for Single Family Dwellings

Year	New Britain Township	Plumstead Township	Warrington Township	Warwick Township	Total
2013	2	123	96	36	324
2014	0	120	87	6	238
2015	11	93	121	5	265
2016	19	146	112	20	335
2017	64	146	53	33	357
2018	66	64	67	42	313
2019	18	23	55	30	196
2020	11	17	69	15	169
2021	14	30	104	1	195
2022	8	84	77	1	232
2023*	4	16	15	5	72

Source: SOCDS Building Permits Database

*preliminary through October 2023

Central Bucks School District

The table below illustrates new housing developments underway in the District.

Central Bucks School District Housing Development

Name/Address	Borough/Township	Type	Total Number of Units	Number Completed	Number to be Built	Completion Year
McKee Development	Buckingham Twp.	Single family, townhomes	41	0	41	unknown
Lantern Ridge	Plumstead Twp.	Single family, townhomes	103	103	0	2023-2024
Holly Ridge	Plumstead Twp.	Single family	13	0	13	March/April 2024
Total			157	103	54	

Source: Buckingham Township, Plumstead Township

Central Bucks School District

SURVIVAL RATIOS

The chart below demonstrates the changes in enrollment as students move through the system. Percentages greater than 100 indicate that there are more students than there were in the previous grade the previous year. In other words, there was growth and new students entered the system. Percentages less than 100 indicate that there was decline with students leaving the system.

- Birth to Kindergarten: This ratio indicates the number of children born in the area who attend kindergarten in the District 5 years later. Percentages less than 100% result from movement out of the district, attendance at a non-public or charter school, or residence in another district within the same area.

The following table illustrates the survival ratios for the Central Bucks School District.

from	to	birth -> K	K->1	1->2	2->3	3->4	4->5	5->6	6->7	7->8	8->9	9->10	10->11	11->12
2014	2015	96.3%	127.7%	104.3%	100.8%	101.6%	102.2%	100.5%	101.2%	101.5%	98.3%	100.1%	100.2%	102.0%
2015	2016	99.8%	131.2%	104.4%	101.9%	101.8%	102.0%	101.9%	101.3%	100.1%	97.5%	100.9%	98.7%	101.2%
2016	2017	102.4%	131.7%	104.7%	104.8%	102.2%	102.2%	103.0%	101.6%	101.5%	99.0%	100.1%	100.9%	101.6%
2017	2018	99.5%	139.2%	104.4%	103.6%	102.9%	101.6%	103.4%	102.4%	101.3%	99.0%	100.8%	99.9%	102.7%
2018	2019	96.5%	131.0%	103.6%	102.2%	103.1%	105.3%	103.2%	101.2%	101.7%	100.3%	101.5%	100.6%	103.8%
2019	2020	95.5%	126.1%	100.3%	100.1%	100.5%	100.2%	100.7%	100.0%	99.5%	97.7%	99.5%	100.2%	103.4%
2020	2021	88.9%	146.6%	106.6%	105.5%	105.5%	103.6%	103.8%	101.4%	101.8%	100.5%	100.3%	99.5%	102.0%
2021	2022	97.5%	141.9%	103.4%	104.2%	105.0%	102.5%	102.8%	102.1%	102.2%	99.8%	101.8%	101.3%	103.9%
2022	2023	83.5%	137.0%	101.9%	103.2%	102.6%	102.0%	102.7%	102.8%	102.2%	98.5%	101.0%	100.1%	99.4%
	average	95.55%	134.702%	103.73%	102.9%	102.81%	102.4%	102.4%	101.6%	101.3%	98.964%	100.678%	100.155%	102.220%
	standard deviation	5.518%	6.465%	1.696%	1.709%	1.491%	1.328%	1.097%	0.768%	0.867%	1.011%	0.688%	0.712%	1.361%

Central Bucks School District

ENROLLMENT PROJECTION

Enrollment projections were developed after analyzing the data collected in this report. The projections indicate an increase of 9 students in grades K through 12. To account for the move from half-day to full-day Kindergarten in the 2025-26 school year, Kindergarten enrollment is projected to be approximately 86% of the first grade enrollment from that year on.

The following tables and graph illustrate projected enrollments by grade and by grade group through the 2033-34 school year.

Central Bucks School District
Projected Enrollment

Grade	2023-24 Actual	2024-25	2025-26	2026-27	2027-28	2028-29	2029-30	2030-31	2031-32	2032-33	2033-34
K	721	863	1,023	962	1,080	1,025	1,025	1,025	1,025	1,025	1,025
1	1,159	990	1,183	1,114	1,253	1,188	1,188	1,188	1,188	1,188	1,188
2	1,239	1,199	1,023	1,223	1,154	1,296	1,226	1,228	1,228	1,228	1,228
3	1,271	1,283	1,244	1,062	1,271	1,195	1,342	1,273	1,273	1,273	1,273
4	1,283	1,314	1,325	1,286	1,099	1,312	1,236	1,389	1,315	1,316	1,316
5	1,353	1,318	1,350	1,362	1,319	1,131	1,348	1,268	1,428	1,352	1,352
6	1,418	1,393	1,355	1,392	1,405	1,363	1,157	1,375	1,295	1,455	1,377
7	1,416	1,451	1,425	1,387	1,424	1,435	1,394	1,184	1,406	1,324	1,490
8	1,409	1,441	1,477	1,450	1,412	1,454	1,462	1,422	1,209	1,432	1,349
9	1,399	1,402	1,434	1,475	1,449	1,400	1,445	1,451	1,413	1,207	1,404
10	1,479	1,416	1,420	1,452	1,490	1,464	1,424	1,459	1,471	1,429	1,217
11	1,520	1,487	1,423	1,427	1,460	1,498	1,471	1,432	1,466	1,478	1,436
12	1,492	1,556	1,522	1,458	1,461	1,494	1,533	1,506	1,466	1,501	1,513
K - 12 Total	17,159	17,113	17,204	17,050	17,277	17,255	17,251	17,200	17,183	17,208	17,168

Source: FutureThink

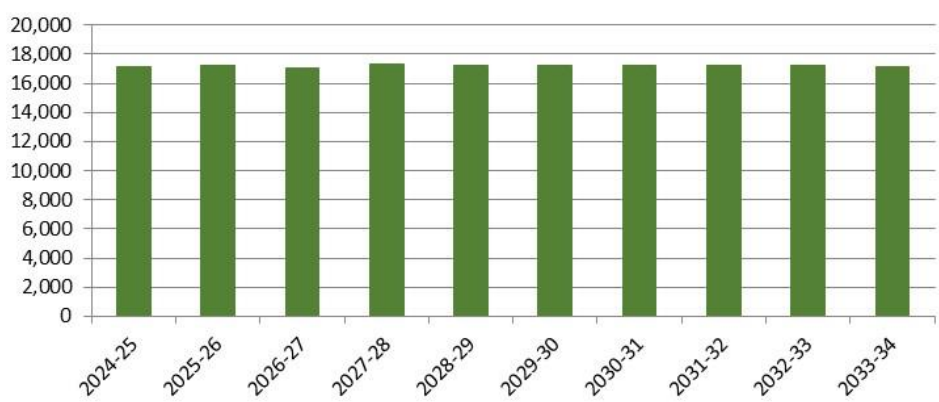
Central Bucks School District
Projected Enrollment by Grade Group

Grade	2023-24 Actual	2024-25	2025-26	2026-27	2027-28	2028-29	2029-30	2030-31	2031-32	2032-33	2033-34
K - 5	7,026	6,967	7,148	7,009	7,176	7,147	7,365	7,371	7,457	7,382	7,382
6 - 8	4,243	4,285	4,257	4,229	4,241	4,252	4,013	3,981	3,910	4,211	4,216
9 - 12	5,890	5,861	5,799	5,812	5,860	5,856	5,873	5,848	5,816	5,615	5,570
K - 12 Total	17,159	17,113	17,204	17,050	17,277	17,255	17,251	17,200	17,183	17,208	17,168

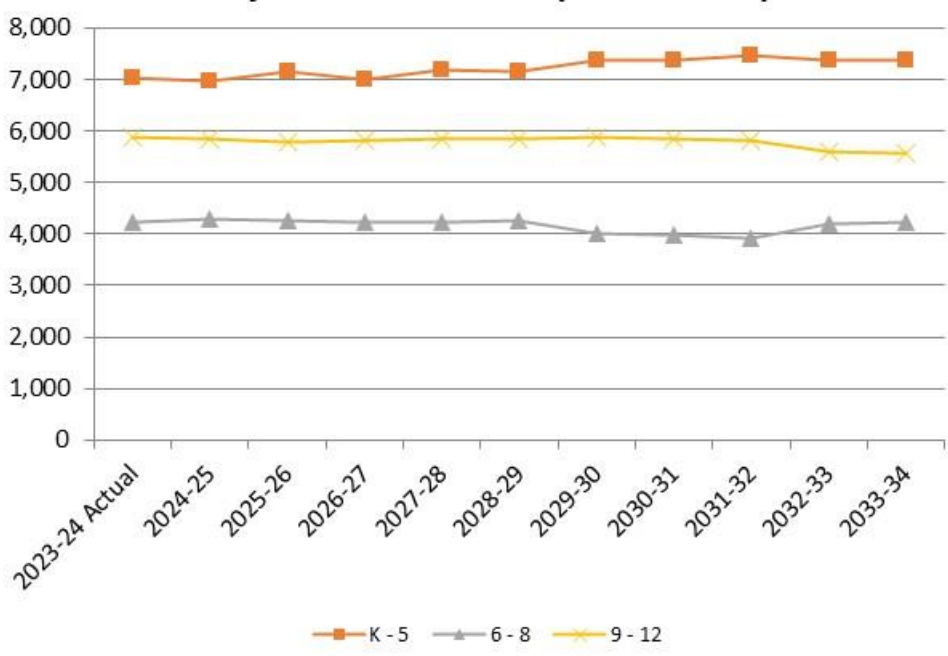
Source: FutureThink

Central Bucks School District

Central Bucks School District
Projected Enrollment



Central Bucks School District
Projected Enrollment by Grade Group



Central Bucks School District

Historical & Projected Enrollment by School

The following charts illustrate the historical and projected enrollment of each school in the District. Please note that the grade configuration of the elementary, middle, and high schools changes from K-6 to K-5, 7-9 to 6-8, and 10-12 to 9-12, respectively.

Barclay Elementary School

Historical Enrollment

Grade	2014-15	2015-16	2016-17	2017-18	2018-19	2019-20	2020-21	2021-22	2022-23	2023-24
K	61	75	64	69	75	84	83	72	85	62
1	67	69	91	87	93	100	102	102	86	100
2	78	73	72	98	92	96	104	103	103	95
3	67	78	72	78	95	97	96	106	108	108
4	69	71	80	73	80	99	98	100	108	117
5	70	73	72	78	76	93	102	104	97	106
6	71	72	78	77	83	73	88	108	107	102
Total	483	511	529	560	594	642	673	695	694	690

Source: Pennsylvania Department of Education; Central Bucks School District

Barclay Elementary School

Projected Enrollment

Grade	2024-25	2025-26	2026-27	2027-28	2028-29	2029-30	2030-31	2031-32	2032-33	2033-34
K	80	83	78	88	83	83	83	83	83	83
1	75	96	91	102	97	97	97	97	97	97
2	105	78	101	95	107	101	101	101	101	101
3	100	110	82	106	100	112	106	106	106	106
4	113	104	115	86	111	104	117	111	111	111
5	118	113	105	116	87	112	105	118	112	112
Total	591	584	572	593	585	609	609	616	610	610

Source: FutureThink



Central Bucks School District

Bridge Valley Elementary School

Historical Enrollment

Grade	2014-15	2015-16	2016-17	2017-18	2018-19	2019-20	2020-21	2021-22	2022-23	2023-24
K	66	64	70	70	77	66	68	70	63	58
1	107	97	90	92	97	97	81	99	102	93
2	124	108	101	97	101	98	97	91	105	98
3	110	122	111	100	98	106	96	112	91	110
4	124	109	121	110	104	101	107	99	115	89
5	128	124	111	125	119	111	101	110	100	113
6	143	134	125	116	131	120	114	102	119	100
Total	802	758	729	710	727	699	664	683	695	661

Source: Pennsylvania Department of Education; Central Bucks School District

Bridge Valley Elementary School

Projected Enrollment

Grade	2024-25	2025-26	2026-27	2027-28	2028-29	2029-30	2030-31	2031-32	2032-33	2033-34
K	65	83	78	87	83	83	83	83	83	83
1	85	96	90	101	96	96	96	96	96	96
2	94	86	97	91	102	97	97	97	97	97
3	101	97	88	99	94	105	100	100	100	100
4	111	102	98	89	100	95	106	101	101	101
5	90	113	103	99	90	102	96	108	102	102
Total	546	577	554	566	565	578	578	585	579	579

Source: FutureThink

Buckingham Elementary School

Historical Enrollment

Grade	2014-15	2015-16	2016-17	2017-18	2018-19	2019-20	2020-21	2021-22	2022-23	2023-24
K	72	46	43	49	51	42	49	59	40	40
1	48	82	55	52	64	60	56	63	77	49
2	69	53	85	60	57	62	63	62	65	84
3	71	70	54	86	66	57	67	68	58	62
4	79	73	74	54	85	66	62	69	72	58
5	86	83	72	80	59	91	65	65	71	76
6	78	83	82	78	79	62	82	68	67	77
Total	503	490	465	459	461	440	444	454	450	446

Source: Pennsylvania Department of Education; Central Bucks School District

Buckingham Elementary School

Projected Enrollment

Grade	2024-25	2025-26	2026-27	2027-28	2028-29	2029-30	2030-31	2031-32	2032-33	2033-34
K	44	47	45	50	48	48	48	48	48	48
1	51	55	52	58	55	55	55	55	55	55
2	53	54	59	56	63	59	59	59	59	59
3	85	53	55	60	56	63	60	60	60	60
4	64	87	55	56	61	58	65	62	62	62
5	61	67	91	57	59	64	61	68	65	65
Total	358	363	357	337	342	347	348	352	349	349

Source: FutureThink

Central Bucks School District

Butler Elementary School

Historical Enrollment

Grade	2014-15	2015-16	2016-17	2017-18	2018-19	2019-20	2020-21	2021-22	2022-23	2023-24
K	82	92	82	88	114	74	83	86	81	64
1	119	102	114	114	116	133	84	117	114	101
2	126	129	100	118	118	122	132	102	128	119
3	124	124	133	111	114	120	124	132	102	133
4	140	127	122	137	115	118	119	130	140	105
5	131	144	126	126	145	127	123	127	135	138
6	122	125	147	130	131	150	122	123	127	141
Total	844	843	824	824	853	844	787	817	827	801

Source: Pennsylvania Department of Education; Central Bucks School District

Butler Elementary School

Projected Enrollment

Grade	2024-25	2025-26	2026-27	2027-28	2028-29	2029-30	2030-31	2031-32	2032-33	2033-34
K	85	94	88	99	94	94	94	94	94	94
1	82	109	102	115	109	109	109	109	109	109
2	107	87	116	109	122	116	116	116	116	116
3	122	110	90	119	112	126	119	119	119	119
4	139	128	115	94	124	117	131	124	124	124
5	112	148	136	122	100	132	124	139	132	132
Total	647	676	647	658	661	694	693	701	694	694

Source: FutureThink

Cold Spring Elementary School

Historical Enrollment

Grade	2014-15	2015-16	2016-17	2017-18	2018-19	2019-20	2020-21	2021-22	2022-23	2023-24
K	51	49	47	60	45	37	37	37	50	44
1	76	64	68	64	77	59	56	70	66	78
2	86	82	70	73	74	82	63	57	74	67
3	75	87	83	73	70	73	79	73	61	80
4	91	77	88	85	77	72	71	82	77	60
5	107	85	79	85	84	80	72	83	84	77
6	117	108	86	79	88	87	85	75	88	83
Total	603	552	521	519	515	490	463	477	500	489

Source: Pennsylvania Department of Education; Central Bucks School District

Cold Spring Elementary School

Projected Enrollment

Grade	2024-25	2025-26	2026-27	2027-28	2028-29	2029-30	2030-31	2031-32	2032-33	2033-34
K	45	58	55	61	58	58	58	58	58	58
1	65	67	63	71	67	67	67	67	67	67
2	83	69	71	67	76	72	72	72	72	72
3	69	86	72	74	70	78	74	74	74	74
4	82	71	88	74	76	71	80	76	76	76
5	61	83	72	89	75	77	72	81	77	77
Total	405	434	421	436	422	423	423	428	424	424

Source: FutureThink

Central Bucks School District

Doyle Elementary School

Historical Enrollment

Grade	2014-15	2015-16	2016-17	2017-18	2018-19	2019-20	2020-21	2021-22	2022-23	2023-24
K	48	51	49	36	42	42	41	38	36	20
1	79	52	69	77	62	66	59	58	71	57
2	56	80	59	73	78	62	62	65	56	72
3	76	66	82	67	73	78	62	60	68	57
4	79	78	72	80	67	75	82	60	60	76
5	67	80	83	78	79	67	72	83	60	60
6	80	72	77	80	81	82	68	73	81	62
Total	485	479	491	491	482	472	446	437	432	404

Source: Pennsylvania Department of Education; Central Bucks School District

Doyle Elementary School

Projected Enrollment

Grade	2024-25	2025-26	2026-27	2027-28	2028-29	2029-30	2030-31	2031-32	2032-33	2033-34
K	39	54	51	57	54	54	54	54	54	54
1	32	63	59	66	63	63	63	63	63	63
2	58	33	64	60	67	64	64	64	64	64
3	73	59	33	65	61	69	65	65	65	65
4	59	76	61	35	67	63	71	67	67	67
5	76	59	76	61	35	67	63	71	67	67
Total	337	344	344	344	347	380	380	384	380	380

Source: FutureThink

Gayman Elementary School

Historical Enrollment

Grade	2014-15	2015-16	2016-17	2017-18	2018-19	2019-20	2020-21	2021-22	2022-23	2023-24
K	42	34	33	40	46	33	36	36	34	28
1	45	61	61	44	64	65	52	54	54	50
2	82	52	64	61	44	74	63	56	58	50
3	71	77	51	61	64	48	72	72	60	59
4	75	74	77	53	66	66	48	73	77	60
5	77	85	74	78	51	70	66	53	76	76
6	86	76	89	75	80	51	69	72	55	78
Total	478	459	449	412	415	407	406	416	414	401

Source: Pennsylvania Department of Education; Central Bucks School District

Gayman Elementary School

Projected Enrollment

Grade	2024-25	2025-26	2026-27	2027-28	2028-29	2029-30	2030-31	2031-32	2032-33	2033-34
K	34	43	41	46	43	43	43	43	43	43
1	42	50	47	53	50	50	50	50	50	50
2	50	42	50	47	53	50	50	50	50	50
3	53	53	44	53	50	56	53	53	53	53
4	61	55	55	45	55	51	58	55	55	55
5	61	62	55	55	46	55	52	59	56	56
Total	301	305	292	299	297	305	306	310	307	307

Source: FutureThink

Central Bucks School District

Groveland Elementary School

Historical Enrollment

Grade	2014-15	2015-16	2016-17	2017-18	2018-19	2019-20	2020-21	2021-22	2022-23	2023-24
K	85	99	96	92	83	89	79	76	76	70
1	126	118	131	132	136	108	105	116	121	105
2	133	130	120	130	132	137	112	113	109	119
3	113	136	133	128	133	132	135	108	120	116
4	118	112	135	132	133	136	131	144	110	121
5	149	118	110	140	137	137	136	129	147	113
6	168	146	124	120	148	141	141	130	128	149
Total	892	859	849	874	902	880	839	816	811	793

Source: Pennsylvania Department of Education; Central Bucks School District

Groveland Elementary School

Projected Enrollment

Grade	2024-25	2025-26	2026-27	2027-28	2028-29	2029-30	2030-31	2031-32	2032-33	2033-34
K	79	95	89	100	95	95	95	95	95	95
1	97	110	103	116	110	110	110	110	110	110
2	105	97	109	103	116	109	110	110	110	110
3	122	107	99	112	105	118	112	112	112	112
4	119	124	109	101	114	108	121	114	115	115
5	124	122	128	112	104	117	110	124	117	117
Total	646	655	637	644	644	657	658	665	659	659

Source: FutureThink

Jamison Elementary School

Historical Enrollment

Grade	2014-15	2015-16	2016-17	2017-18	2018-19	2019-20	2020-21	2021-22	2022-23	2023-24
K	58	49	64	56	44	71	61	53	58	58
1	82	75	66	73	74	60	92	100	78	88
2	74	86	76	72	75	77	67	94	106	79
3	88	70	90	79	77	80	76	69	92	103
4	84	91	73	91	81	81	74	86	80	97
5	102	83	90	74	91	87	80	73	95	80
6	103	99	81	92	79	98	95	83	78	97
Total	591	553	540	537	521	554	545	558	587	602

Source: Pennsylvania Department of Education; Central Bucks School District

Jamison Elementary School

Projected Enrollment

Grade	2024-25	2025-26	2026-27	2027-28	2028-29	2029-30	2030-31	2031-32	2032-33	2033-34
K	61	77	72	81	77	77	77	77	77	77
1	84	89	84	94	89	89	89	89	89	89
2	91	87	92	87	98	93	93	93	93	93
3	82	95	91	96	90	101	96	96	96	96
4	108	86	100	96	101	95	107	101	101	101
5	101	113	90	104	100	105	99	112	106	106
Total	527	547	529	558	555	560	561	568	562	562

Source: FutureThink

Central Bucks School District

Kutz Elementary School

Historical Enrollment

Grade	2014-15	2015-16	2016-17	2017-18	2018-19	2019-20	2020-21	2021-22	2022-23	2023-24
K	54	62	60	41	53	47	34	41	40	30
1	80	68	71	81	70	70	76	55	53	60
2	91	78	72	73	82	70	67	79	59	56
3	100	92	86	78	77	86	76	69	88	61
4	93	101	95	84	78	75	87	76	74	88
5	105	93	111	96	82	81	70	87	84	76
6	70	111	96	113	94	85	80	77	89	89
Total	593	605	591	566	536	514	490	484	487	460

Source: Pennsylvania Department of Education; Central Bucks School District

Kutz Elementary School

Projected Enrollment

Grade	2024-25	2025-26	2026-27	2027-28	2028-29	2029-30	2030-31	2031-32	2032-33	2033-34
K	42	53	50	56	53	53	53	53	53	53
1	44	61	58	65	61	61	61	61	61	61
2	62	45	63	60	67	63	63	63	63	63
3	59	65	48	67	63	71	67	67	67	67
4	62	60	67	48	68	64	72	68	68	68
5	91	64	62	69	50	71	66	75	71	71
Total	360	348	348	365	362	383	382	387	383	383

Source: FutureThink

Linden Elementary School

Historical Enrollment

Grade	2014-15	2015-16	2016-17	2017-18	2018-19	2019-20	2020-21	2021-22	2022-23	2023-24
K	32	31	40	45	42	46	26	52	38	28
1	76	41	50	57	61	57	53	46	61	49
2	60	77	47	47	61	66	63	51	44	61
3	80	60	78	52	51	57	69	62	49	45
4	76	83	60	82	51	54	56	66	58	48
5	58	82	84	59	82	52	57	58	63	60
6	79	59	85	83	64	85	54	59	54	61
Total	461	433	444	425	412	417	378	394	367	352

Source: Pennsylvania Department of Education; Central Bucks School District

Linden Elementary School

Projected Enrollment

Grade	2024-25	2025-26	2026-27	2027-28	2028-29	2029-30	2030-31	2031-32	2032-33	2033-34
K	39	44	41	47	44	44	44	44	44	44
1	36	51	48	54	51	51	51	51	51	51
2	50	37	52	49	55	52	52	52	52	52
3	62	51	38	53	50	56	53	53	53	53
4	44	61	50	37	52	49	55	52	52	52
5	49	45	62	51	38	53	50	56	53	53
Total	280	289	291	291	290	305	305	308	305	305

Source: FutureThink

Central Bucks School District

Mill Creek Elementary School

Historical Enrollment

Grade	2014-15	2015-16	2016-17	2017-18	2018-19	2019-20	2020-21	2021-22	2022-23	2023-24
K	76	65	71	56	61	68	68	73	74	78
1	109	100	86	88	95	84	85	96	98	106
2	135	116	105	94	101	99	89	95	93	102
3	143	139	124	107	104	104	103	100	105	100
4	141	146	146	127	116	107	108	117	106	115
5	171	143	152	153	121	117	113	113	117	115
6	177	174	148	156	161	130	127	127	122	124
Total	952	883	832	781	759	709	693	721	715	740

Source: Pennsylvania Department of Education; Central Bucks School District

Mill Creek Elementary School

Projected Enrollment

Grade	2024-25	2025-26	2026-27	2027-28	2028-29	2029-30	2030-31	2031-32	2032-33	2033-34
K	78	93	88	99	94	94	94	94	94	94
1	108	108	102	115	109	109	109	109	109	109
2	111	113	113	107	120	113	114	114	114	114
3	109	119	121	121	114	128	122	122	122	122
4	105	115	125	128	128	120	135	128	128	128
5	119	109	119	129	132	132	124	140	132	132
Total	630	657	668	699	697	696	698	707	699	699

Source: FutureThink

Pine Run Elementary School

Historical Enrollment

Grade	2014-15	2015-16	2016-17	2017-18	2018-19	2019-20	2020-21	2021-22	2022-23	2023-24
K	51	48	67	47	49	67	56	45	46	45
1	72	49	56	81	59	69	79	74	74	66
2	59	70	52	60	82	67	64	77	77	78
3	72	63	63	56	63	81	61	67	78	81
4	81	76	63	67	54	66	78	65	72	81
5	84	86	77	63	66	62	68	80	65	74
6	67	84	85	77	64	65	62	75	82	70
Total	486	476	463	451	437	477	468	483	494	495

Source: Pennsylvania Department of Education; Central Bucks School District

Pine Run Elementary School

Projected Enrollment

Grade	2024-25	2025-26	2026-27	2027-28	2028-29	2029-30	2030-31	2031-32	2032-33	2033-34
K	49	61	57	64	61	61	61	61	61	61
1	65	70	66	74	71	71	71	71	71	71
2	70	68	74	70	79	75	75	75	75	75
3	80	72	70	77	72	81	77	77	77	77
4	85	84	75	74	80	76	85	80	80	80
5	83	87	86	77	75	82	77	87	82	82
Total	432	442	428	436	438	446	446	451	446	446

Source: FutureThink

Central Bucks School District

Titus Elementary School

Historical Enrollment

Grade	2014-15	2015-16	2016-17	2017-18	2018-19	2019-20	2020-21	2021-22	2022-23	2023-24
K	63	64	73	76	69	69	49	70	74	51
1	93	89	79	91	84	83	76	67	93	91
2	98	97	93	86	92	85	78	81	73	89
3	96	98	97	101	94	92	82	89	86	78
4	97	90	95	106	106	99	96	96	99	85
5	100	99	92	92	109	104	94	93	102	107
6	101	100	101	99	93	112	100	95	97	102
Total	648	637	630	651	647	644	575	591	624	603

Source: Pennsylvania Department of Education; Central Bucks School District

Titus Elementary School

Projected Enrollment

Grade	2024-25	2025-26	2026-27	2027-28	2028-29	2029-30	2030-31	2031-32	2032-33	2033-34
K	69	75	70	79	75	75	75	75	75	75
1	64	86	81	92	87	87	87	87	87	87
2	93	65	88	83	93	88	88	88	88	88
3	94	98	68	93	87	98	93	93	93	93
4	82	99	103	72	98	92	104	98	98	98
5	87	84	102	106	74	100	95	106	101	101
Total	489	507	512	525	514	540	542	547	542	542

Source: FutureThink

Warwick Elementary School

Historical Enrollment

Grade	2014-15	2015-16	2016-17	2017-18	2018-19	2019-20	2020-21	2021-22	2022-23	2023-24
K	59	56	56	60	61	58	42	49	51	45
1	86	82	74	72	80	84	70	73	68	66
2	87	89	83	74	69	79	74	74	81	70
3	74	87	88	79	81	75	79	77	84	78
4	72	74	92	94	80	84	76	84	79	83
5	92	72	76	97	96	82	82	82	85	82
6	76	92	74	76	96	101	83	83	84	83
Total	546	552	543	552	563	563	506	522	532	507

Source: Pennsylvania Department of Education; Central Bucks School District

Warwick Elementary School

Projected Enrollment

Grade	2024-25	2025-26	2026-27	2027-28	2028-29	2029-30	2030-31	2031-32	2032-33	2033-34
K	54	63	59	66	63	63	63	63	63	63
1	60	72	68	77	73	73	73	73	73	73
2	67	62	74	70	78	74	74	74	74	74
3	72	69	63	76	71	80	76	76	76	76
4	80	73	70	64	77	73	82	78	78	78
5	85	81	75	72	66	79	74	84	79	79
Total	418	420	409	425	428	442	442	448	443	443

Source: FutureThink

Central Bucks School District

Tamanend Middle School

Historical Enrollment

Grade	2014-15	2015-16	2016-17	2017-18	2018-19	2019-20	2020-21	2021-22	2022-23	2023-24
7	267	292	291	265	291	271	283	274	298	290
8	313	276	293	289	280	296	275	285	277	318
9	289	302	272	294	277	285	295	282	296	280
Total	869	870	856	848	848	852	853	841	871	888

Source: Pennsylvania Department of Education; Central Bucks School District

Tamanend Middle School

Projected Enrollment

Grade	2024-25	2025-26	2026-27	2027-28	2028-29	2029-30	2030-31	2031-32	2032-33	2033-34
6	302	320	326	305	335	264	318	300	337	319
7	314	315	334	340	318	349	275	332	312	351
8	301	326	327	347	353	330	363	286	344	324
Total	917	961	987	992	1,006	943	956	918	993	994

Source: FutureThink

Lenape Middle School

Historical Enrollment

Grade	2014-15	2015-16	2016-17	2017-18	2018-19	2019-20	2020-21	2021-22	2022-23	2023-24
7	293	278	300	305	314	293	303	265	260	267
8	295	295	278	298	302	312	290	308	271	254
9	289	291	291	273	301	292	296	294	308	258
Total	877	864	869	876	917	897	889	867	839	779

Source: Pennsylvania Department of Education; Central Bucks School District

Lenape Middle School

Projected Enrollment

Grade	2024-25	2025-26	2026-27	2027-28	2028-29	2029-30	2030-31	2031-32	2032-33	2033-34
6	252	262	226	254	233	169	242	228	256	242
7	253	249	259	223	251	231	167	239	225	254
8	266	252	248	258	223	250	230	167	238	224
Total	771	763	733	735	707	650	639	634	719	720

Source: FutureThink



Central Bucks School District

Holicong Middle School

Historical Enrollment

Grade	2014-15	2015-16	2016-17	2017-18	2018-19	2019-20	2020-21	2021-22	2022-23	2023-24
7	357	366	351	332	317	332	314	311	285	311
8	377	356	367	363	338	320	323	324	328	289
9	384	358	339	364	356	342	310	321	325	310
Total	1118	1080	1057	1059	1011	994	947	956	938	910

Source: Pennsylvania Department of Education; Central Bucks School District

Holicong Middle School

Projected Enrollment

Grade	2024-25	2025-26	2026-27	2027-28	2028-29	2029-30	2030-31	2031-32	2032-33	2033-34
6	306	264	300	306	284	254	281	264	297	281
7	305	312	270	306	312	290	259	286	270	303
8	316	310	316	274	311	317	294	263	291	274
Total	927	886	886	886	907	861	834	813	858	858

Source: FutureThink

Tohickon Middle School

Historical Enrollment

Grade	2014-15	2015-16	2016-17	2017-18	2018-19	2019-20	2020-21	2021-22	2022-23	2023-24
7	340	341	312	306	284	304	271	292	282	286
8	330	353	337	323	304	296	306	276	290	288
9	333	336	336	341	318	309	289	310	267	296
Total	1003	1030	985	970	906	909	866	878	839	870

Source: Pennsylvania Department of Education; Central Bucks School District

Tohickon Middle School

Projected Enrollment

Grade	2024-25	2025-26	2026-27	2027-28	2028-29	2029-30	2030-31	2031-32	2032-33	2033-34
6	268	272	274	274	249	230	276	260	292	277
7	311	281	284	286	286	260	241	289	272	306
8	290	315	285	288	291	290	264	245	293	276
Total	869	868	843	848	826	780	781	794	857	859

Source: FutureThink



Central Bucks School District

Unami Middle School

Historical Enrollment

Grade	2014-15	2015-16	2016-17	2017-18	2018-19	2019-20	2020-21	2021-22	2022-23	2023-24
7	295	279	301	294	280	290	271	247	254	262
8	300	295	282	305	298	287	289	275	254	260
9	297	301	297	270	310	298	287	284	269	255
Total	892	875	880	869	888	875	847	806	777	777

Source: Pennsylvania Department of Education; Central Bucks School District

Unami Middle School

Projected Enrollment

Grade	2024-25	2025-26	2026-27	2027-28	2028-29	2029-30	2030-31	2031-32	2032-33	2033-34
6	265	237	266	266	262	240	258	243	273	258
7	268	268	240	269	268	264	242	260	245	276
8	268	274	274	245	276	275	271	248	266	251
Total	801	779	780	780	806	779	771	751	784	785

Source: FutureThink

Central Bucks High School East

Historical Enrollment

Grade	2014-15	2015-16	2016-17	2017-18	2018-19	2019-20	2020-21	2021-22	2022-23	2023-24
10	546	533	514	498	536	483	465	425	462	431
11	565	548	520	514	492	532	490	463	425	462
12	512	563	548	521	526	502	543	497	478	427
Total	1,623	1,644	1,582	1,533	1,554	1,517	1,498	1,385	1,365	1,320

Source: Pennsylvania Department of Education; Central Bucks School District

Central Bucks High School East

Projected Enrollment

Grade	2024-25	2025-26	2026-27	2027-28	2028-29	2029-30	2030-31	2031-32	2032-33	2033-34
9	469	499	513	500	440	480	483	449	403	452
10	444	417	444	457	445	391	427	430	399	359
11	431	444	417	444	457	445	391	427	430	399
12	471	439	453	425	452	466	454	399	436	438
Total	1,815	1,799	1,827	1,826	1,794	1,782	1,755	1,705	1,668	1,648

Source: FutureThink



Central Bucks School District

Central Bucks High School South

Historical Enrollment

Grade	2014-15	2015-16	2016-17	2017-18	2018-19	2019-20	2020-21	2021-22	2022-23	2023-24
10	619	570	609	559	556	592	584	574	564	580
11	595	620	564	611	556	562	586	571	572	585
12	641	608	628	567	618	570	566	577	584	582
Total	1,855	1,798	1,801	1,737	1,730	1,724	1,736	1,722	1,720	1,747

Source: Pennsylvania Department of Education; Central Bucks School District

Central Bucks High School South

Projected Enrollment

Grade	2024-25	2025-26	2026-27	2027-28	2028-29	2029-30	2030-31	2031-32	2032-33	2033-34
9	580	570	603	604	593	629	605	636	536	603
10	537	582	573	605	607	596	632	608	639	539
11	583	540	585	576	609	610	599	635	611	642
12	593	591	548	593	584	617	619	607	644	620
Total	2,293	2,283	2,309	2,378	2,393	2,452	2,455	2,486	2,430	2,404

Source: FutureThink

Central Bucks High School West

Historical Enrollment

Grade	2014-15	2015-16	2016-17	2017-18	2018-19	2019-20	2020-21	2021-22	2022-23	2023-24
10	459	490	480	480	462	511	470	483	492	468
11	480	459	489	492	487	470	513	477	504	473
12	527	502	470	510	517	522	508	546	508	483
Total	1,466	1,451	1,439	1,482	1,466	1,503	1,491	1,506	1,504	1,424

Source: Pennsylvania Department of Education; Central Bucks School District

Central Bucks High School West

Projected Enrollment

Grade	2024-25	2025-26	2026-27	2027-28	2028-29	2029-30	2030-31	2031-32	2032-33	2033-34
9	353	365	359	345	367	336	363	328	268	349
10	435	421	435	428	412	437	400	433	391	319
11	473	439	425	440	432	416	442	404	437	395
12	492	492	457	443	458	450	433	460	421	455
Total	1,753	1,717	1,676	1,656	1,669	1,639	1,638	1,625	1,517	1,518

Source: FutureThink

CONCLUSION

As with any projection, the District should pay close attention to live birth counts, enrollment in elementary schools, and any housing growth. Each of these factors will have an impact on future student enrollment.

FutureThink is pleased to have had the opportunity to provide the District with enrollment projection services. We hope this document will provide the necessary information to make informed decisions about the future of the Central Bucks School District.

